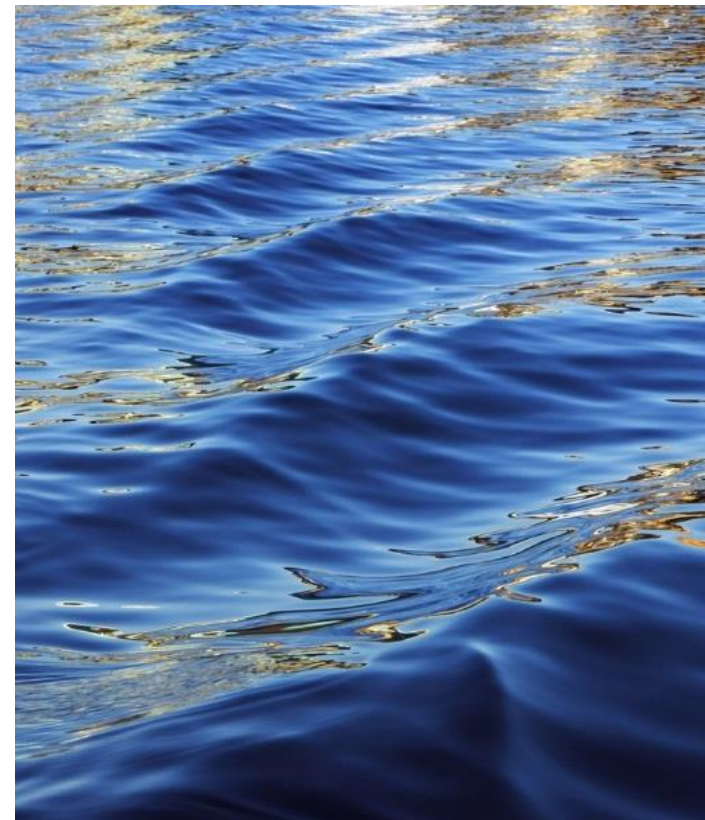




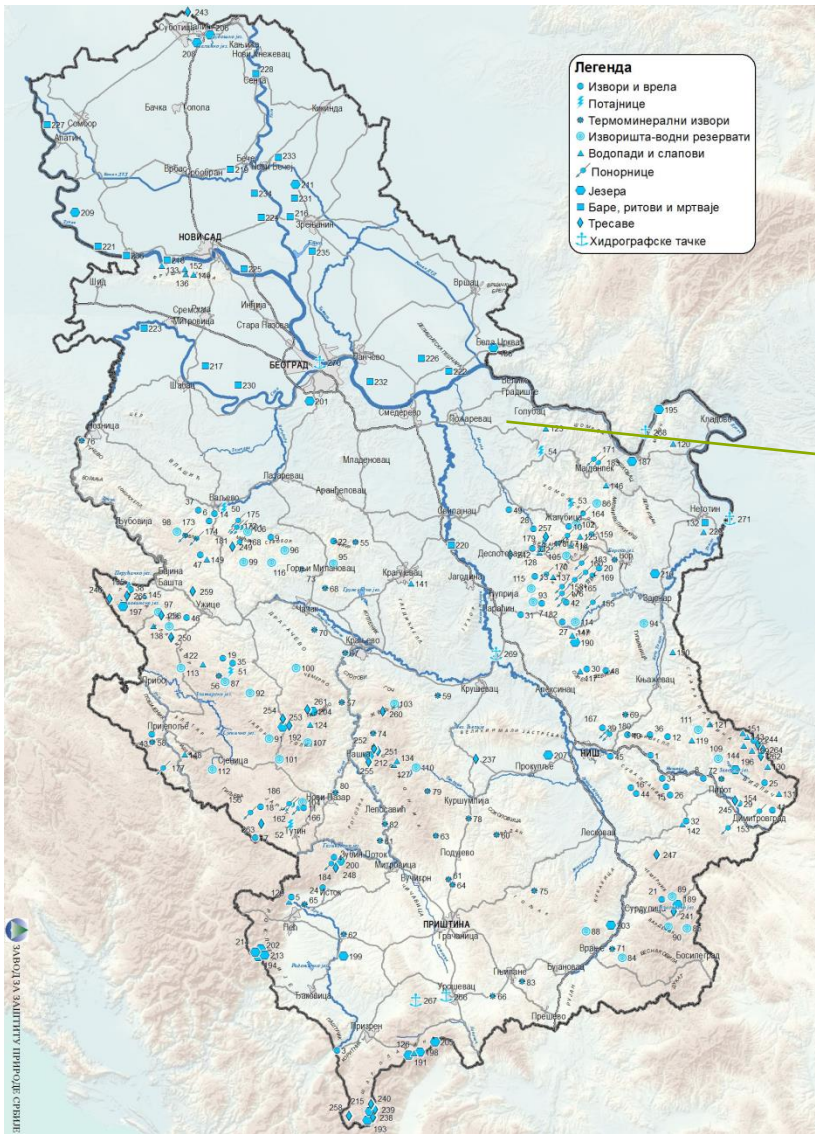
Water map of Serbia



Rivers of Serbia

- Top three largest rivers of Serbia:
- **Danube** - an international river, flows into the Black Sea, springs from under the Schwarzwald mountain, the longest river in Serbia.
- **Sava** - a tributary of the Danube, the second longest river in Serbia.
- **Great Morava** - Serbian domestic river, consists of two rivers that originate in Serbia; South and West Morava. It flows into the Danube like most larger rivers of Serbia.

The course of the river Danube through Serbia



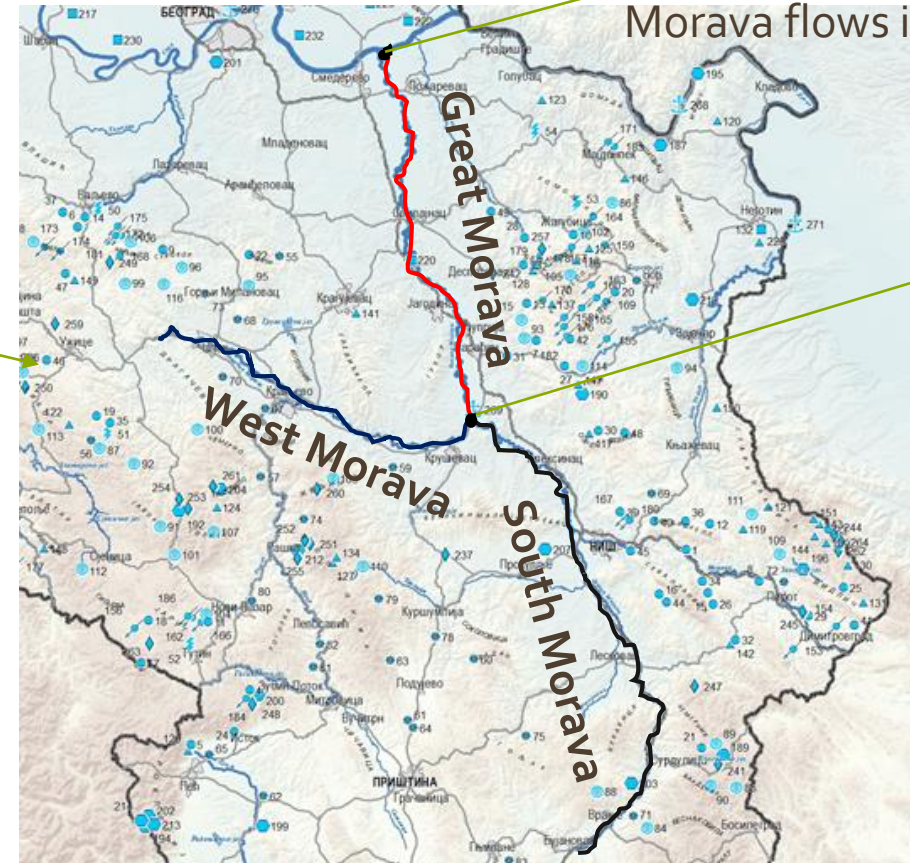
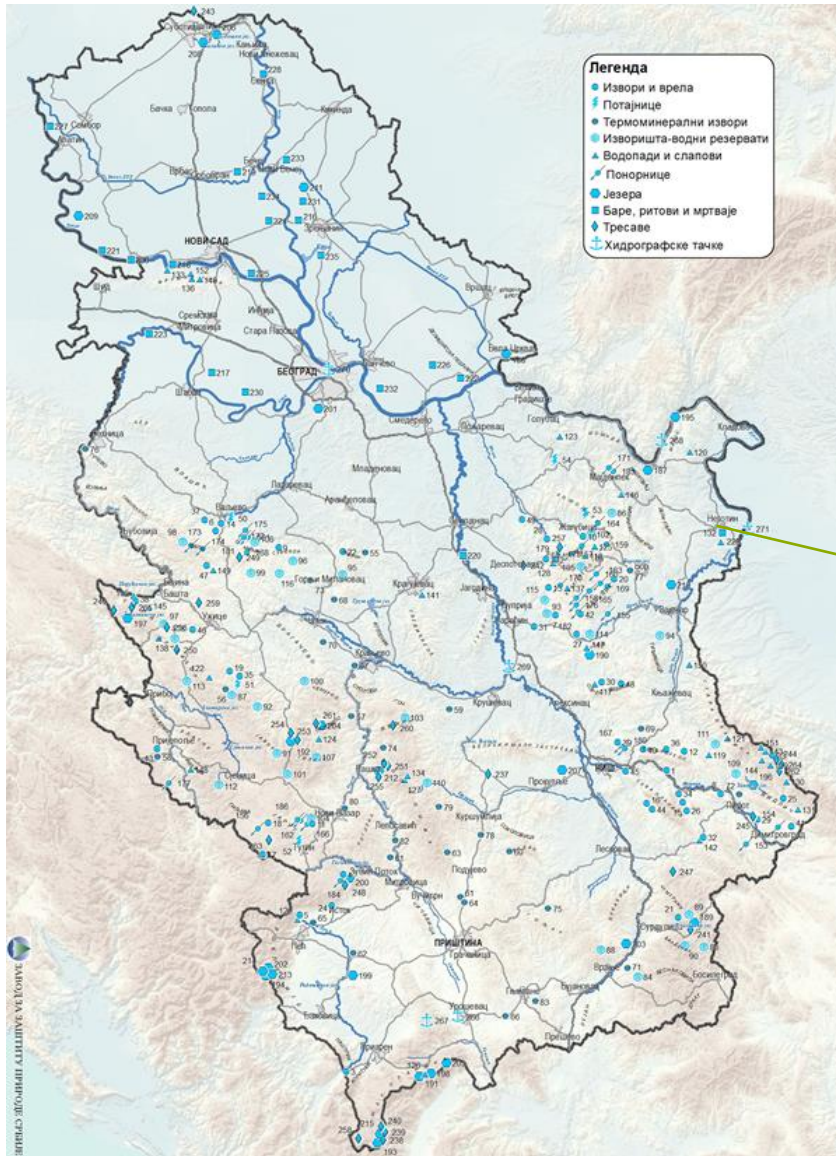
The course of the river Sava through Serbia



The place where the Sava flows into the Danube



The course of the river Great Morava through Serbia

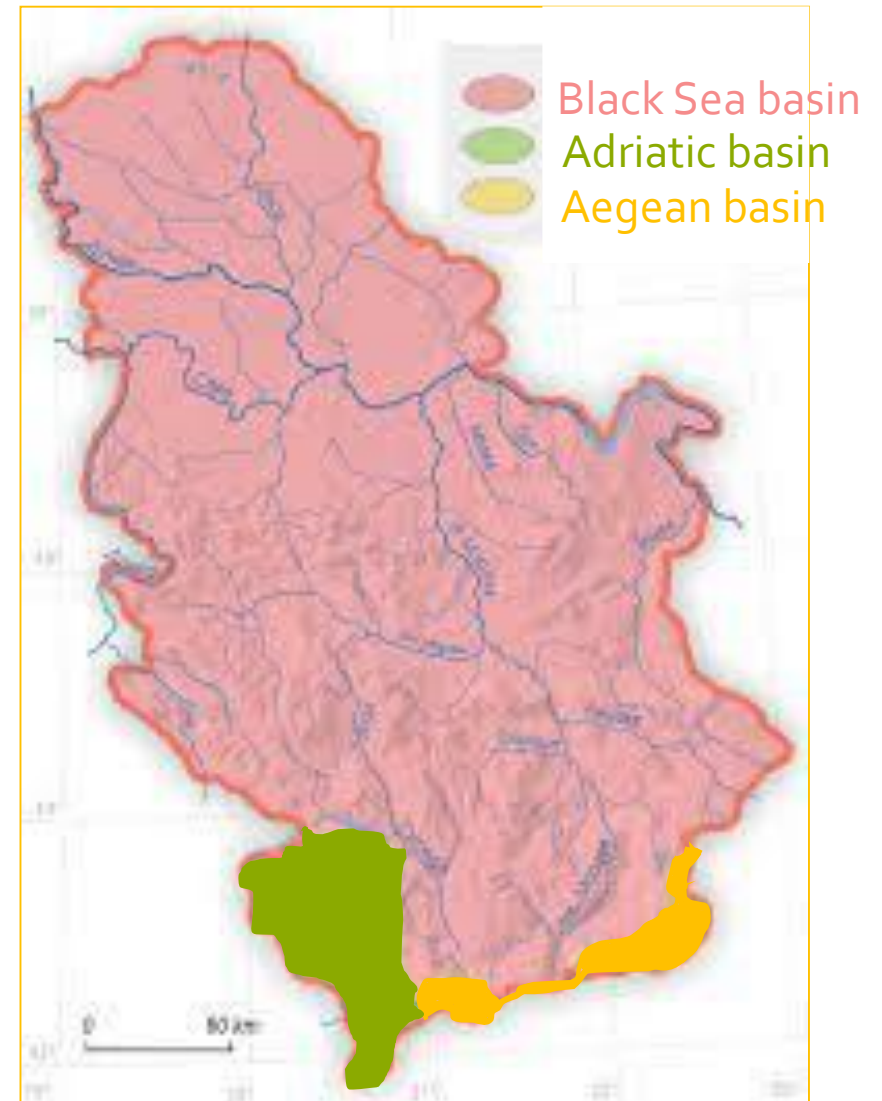


The place where the Great Morava flows into the Danube

The place where West and South Morava come together and build a Great Morava

Basins of Serbia

- Serbia's river network connects Serbia with Europe and many countries. Its rivers flow into three basins: the Black Sea, Adriatic and Aegean basins.
- The Black Sea basin - The area of this basin is the largest in Serbia. All major rivers belong to this basin (Tisa, Sava, Velika Morava, Drina, Ibar) and all those across the Danube flow into the Black Sea.
- The Adriatic basin - the White Drim River flows into the Black Drim in Albania, forming the Drim and flows into the Adriatic Sea.
- The Aegean basin - The Lepenac and Pchinja rivers flow into the Vardar, and the Dragovishtica flows into Struma, Bulgaria and the Aegean Sea.



About rivers

- Rivers represent key ecosystems that provide a range of ecosystem services that are vital to the well-being of humans. Moreover, as key ecological corridors, rivers have a great strategic importance for global ecological functions. The Danube River and its basin, as well as numerous other large rivers systems in the world, have undergone serious changes due to long-term human-induced pressures that seriously threaten ecological integrity system.

River pollution

- Scientists have determined that more than a half of the world's rivers are seriously affected by wildlife, and large fish, such as sturgeon, have been replaced by invasive species, such as catfish or Asian carp. The culprits for reducing the biodiversity of rivers are pollution, dams, overfishing, irrigation in agriculture and rising temperatures due to climate change.



The main polluters are people and waste water, while the damage is prevented by waste water treatment systems. Water pollution can be biological, thermal, chemical, manual and physical.

Constructions of small hydropower plants

- There is no place for small hydroelectric power plants in protected areas, because this destroys the rivers in those areas. Simply put - they put rivers in pipes and in that way they disappear.
- In Serbia, there should not be any derivation small hydropower plant, because putting rivers in pipes is a crime against its living world and nature. Also, there should not be any small hydropower plants in protected areas and each one of them should be demolished regardless of whether it is already built or under construction.

- The construction of small hydropower plants causes more and more damage every year, which thus becomes irreparable, even if in the future the institutions show conscience and responsibility and remove small hydropower plants from protected areas, it will never be close to the previous natural state.



Constructions of small hydropower plants

Industrial and tourist pollution

- Factories pollute not only the atmosphere but also the water by releasing toxic and harmful substances into the rivers, which destroy the living world in the rivers. Also the water systems release human feces to clean the sewers. they also throw large amounts of garbage (plastic, paper, cans)...



- Due to tourism, beaches are built around water surfaces for people to enjoy and relax. In Serbia we have a couple of such places because the rivers and lakes of Serbia are very polluted or blocked by dams and power plants. Many lakes that are visited by tourists are artificial and it is not recommended to swim in them because of the large number of bacteria. These bacteria are collected due to poor purification of such lakes. They cannot do it themselves because they are artificially created.

literature

- <http://www.zzps.rs/wp/wp-content/uploads/2019/07/Karta-objekti-hidroloskog-nasle%C4%91a.jpg?script=lat>
- https://www.google.com/imgres?imgurl=https%3A%2F%2Fprofugo.org%2Fwp-content%2Fuploads%2F2019%2F08%2F8-7-19-1.jpg&tbnid=ayDWRLDiXjFStM&vet=12ahUKEwie4azoos_-AhXB8rsIHTogDd4QMygMegUIARDVAQ...i&imgrefurl=https%3A%2F%2Fprofugo.org%2Fmarine-debris-tourism%2F&docid=UgjCp5c89W_z_M&w=671&h=450&q=Industrial%20and%20tourist%20pollution&ved=2ahUKEwie4azoos_-AhXB8rsIHTogDd4QMygMegUIARDVAQ
- https://www.google.com/imgres?imgurl=https%3A%2F%2Fwww.conserve-energy-future.com%2Fwp-content%2Fuploads%2F2020%2F08%2Funderwater-sewage-pipe.jpg&tbnid=TXDOK7a4z3b7lM&vet=12ahUKEwie4azoos_-AhXB8rsIHTogDd4QMygDegUIARDDAQ...i&imgrefurl=https%3A%2F%2Fwww.conserve-energy-future.com%2Fhow-tourism-contributes-pollution.php&docid=YOA3M8C7ijAcWM&w=728&h=489&q=Industrial%20and%20tourist%20pollution&ved=2ahUKEwie4azoos_-AhXB8rsIHTogDd4QMygDegUIARDDAQ
- <http://www.agronews.rs/>
- If you want to read more about this theme, here is link for you! <https://www.icpdr.org/main/danube-basin/serbia>

Thank you for your time,
we hope you learned something helpful!

students from 3rd grade of "Zemun High School": Nevena Buinjac, Marija Đelić,
Ivana Popović, Uroš Pavlović and Đorđe Paunović